



CUEROCRAFT

Crafting Leather, Creating Stories

LEATHER GOODS EXPORTER



Welcome to CueroCraft, where we specialize in crafting premium leather jackets since 2000. Based in the vibrant city of Kolkata, our brand is synonymous with quality, tradition, and innovation. Kolkata, a historical hub for India's leather industry, has been renowned for its skilled artisans and exceptional leather craftsmanship for centuries. At CueroCraft, we proudly continue this legacy by blending traditional techniques with modern designs.

Brief History of Kolkata's Leather Industry

Kolkata's leather industry dates back to the British colonial era, evolving into a major center for leather production and export. Known for its high-quality raw materials and skilled labor force, Kolkata has maintained its reputation as a leading leather goods producer. The city is home to numerous tanneries and leather factories, making it an ideal location for CueroCraft to thrive and deliver top-notch leather products.

Our Aim and Vision

At CueroCraft, our aim is to create exceptional leather jackets that not only meet but exceed the expectations of our discerning customers. We are committed to quality, craftsmanship, and innovation, ensuring that each piece we create is a work of art.

Our Vision is to become a global leader in the leather fashion industry, recognized for our dedication to sustainability, ethical practices, and superior products. We strive to blend tradition with contemporary design, crafting leather jackets that tell unique stories and create lasting memories for our customers.

Join us on this journey as we continue to craft leathers and create stories, one jacket at a time.

LEATHER JACKET

DESCRIPTION

Explore our premium collection of leather jackets, designed to suit a variety of styles and preferences. Biker jackets offer a rugged and edgy look, perfect for motorcycle enthusiasts and fashion-forward individuals. Bomber jackets provide a classic and versatile style, featuring a comfortable fit and timeless design. Moto jackets are sleek and stylish, ideal for those who love a modern, streamlined appearance. Classic jackets embody timeless elegance, suitable for any occasion. Our aviator jackets feature a distinctive design with shearling collars, inspired by pilot styles. Double rider jackets are known for their bold and rebellious look, with multiple zippers and a fitted design. Blazer jackets combine the sophistication of a blazer with the ruggedness of leather, perfect for formal and casual settings. Fitted jackets offer a tailored fit, enhancing the wearer's silhouette while providing a contemporary and fashionable look. Each jacket is crafted from high-quality leather, ensuring durability, comfort, and a luxurious feel.

BIKER

Casual and Formal (M/F)



CCLJKBK - 101



CCLJKBK - 102



CCLJKBK - 103

LEATHER JACKET

BOMBER

Casual and Formal (M/F)



CCLJKBM - 101



CCLJKBM - 102



CCLJKBM - 103

MOTO

Casual and Formal (M/F)



CCLJKMT - 101



CCLJKMT - 102



CCLJKMT - 103

LEATHER JACKET

CLASSIC

Casual and Formal (M/F)



CCLJKCL - 101



CCLJKCL - 102



CCLJKCL - 103

AVIATOR

Casual and Formal (M/F)



CCLJKAV - 101



CCLJKAV - 102



CCLJKAV - 103

LEATHER JACKET

BLAZER

Casual and Formal (M/F)



CCLJKBZ - 101



CCLJKBZ - 102



CCLJKBZ - 103

FITTED

Casual and Formal (M/F)



CCLJKFT - 101



CCLJKFT - 102

LEATHER BELTS

DESCRIPTION

At CueroCraft, we specialize in crafting premium leather belts made from top grain, full grain, and Napa leather. Our belts, available in various styles such as formal, casual, and specialty, are designed for durability and elegance. Each belt reflects meticulous craftsmanship, ensuring both timeless style and exceptional quality.

OFFICE / BUSINESS

Formal



CCLB(M)FM - 101



CCLB(M)FM - 102



CCLB(M)FM - 103



CCLB(M)FM - 104



CCLB(M)FM - 105

LEATHER BELTS

OFFICE / BUSINESS
Formal



CCLB(F)FM - 101



CCLB(F)FM - 102



CCLB(F)FM - 103



CCLB(F)FM - 104



CCLB(F)FM - 105

LEATHER BELTS

CASUAL/PARTY
CASUAL



CCLB(M)CU - 101



CCLB(M)CU - 102



CCLB(M)CU - 103



CCLB(M)CU - 104



CCLB(M)CU - 105

LEATHER BELTS

CASUAL/PARTY
CASUAL



CCLB(F)CU - 101



CCLB(F)CU - 102



CCLB(F)CU - 103



CCLB(F)CU - 104



CCLB(F)CU - 105

LEATHER WALLET

DESCRIPTION

Discover our exceptional range of leather wallets, each designed to cater to diverse needs and styles. Our bifold wallets offer a classic, streamlined design with ample space for your essentials, while trifold wallets provide superior organization with multiple compartments. For minimalists, our slim wallets are sleek and lightweight, offering essential storage without bulk. Our versatile multi wallets accommodate a variety of needs with multiple compartments, ensuring you stay organized in style. Lastly, our elegant cardholders keep your cards secure and accessible, perfect for those who value simplicity and convenience. All crafted from premium leather, these wallets combine timeless style with exceptional durability.

BIFOLD

Casual and Formal



CCLW(M)BF - 101



CCLW(M)BF - 102

TRIFOLD

Casual and Formal



CCLW(M)TF - 101



CCLW(M)TF - 102



CCLW(M)TF - 103

SLIM

Casual and Formal



CCLW(M)SL - 101



CCLW(M)SL - 102

MULTI

Casual and Formal



CCLW(M)ML - 101



CCLW(M)ML - 102



CCLW(M)ML - 103

CARDHOLDER

Casual and Formal



CCLW(M)CH - 101



CCLW(M)CH - 102



CCLW(M)CH - 103

LEATHER WALLET

DESCRIPTION

Discover our exquisite collection of women's wallets, each crafted to blend elegance with functionality. Our clutches are perfect for evening events, offering a chic design with ample space for essentials. Wristlets combine style and convenience, featuring a detachable strap for hands-free carrying. Compact wallets provide essential storage in a petite, stylish package, ideal for minimalists. Lastly, our continental wallets offer extensive storage with multiple compartments, perfect for those who need to stay organized on the go. All crafted from premium leather, these wallets ensure you carry your essentials with sophistication and ease.

CLUTH

Casual and Formal



CCLW(F)CL - 101



CCLW(F)CL - 102



CCLW(F)CL - 103



CCLW(F)CL - 104

Wristlet
Casual and Formal



CCLW(F)WS - 101



CCLW(F)WS - 102



CCLW(F)WS - 103



CCLW(F)WS - 104

Compact
Casual and Formal



CCLW(F)CP - 101



CCLW(F)CP - 102



CCLW(F)CP - 103



CCLW(F)CP - 104



CCLW(F)CP - 105

Continental
Casual and Formal



CCLW(F)CN - 101



CCLW(F)CN - 102



CCLW(F)CN - 103

LEATHER HANDBGS

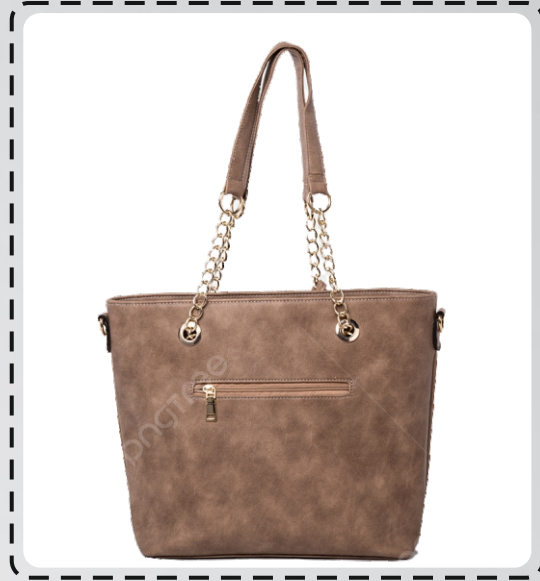
DESCRIPTION

Explore our elegant collection of women's handbags, designed to meet a variety of styles and needs. Our tote bags offer spacious interiors, perfect for everyday use or travel. Shoulder bags combine comfort and style, making them ideal for daily wear. Bucket bags feature a unique, roomy design that adds a fashionable touch to any outfit. Hobo bags are known for their slouchy, casual style, providing ample space and a relaxed look. Crossbody bags offer hands-free convenience with secure, stylish designs. Satchels blend classic elegance with functionality, perfect for both professional and casual settings. Each handbag is crafted from premium leather, ensuring durability and timeless appeal.

TOTE
CASUAL AND FORMAL



CCLH(F)TO - 101



CCLH(F)TO - 102



CCLH(F)TO - 103

SHOULDER
CASUAL AND FORMAL



CCLH(F)SH - 101



CCLH(F)SH - 102

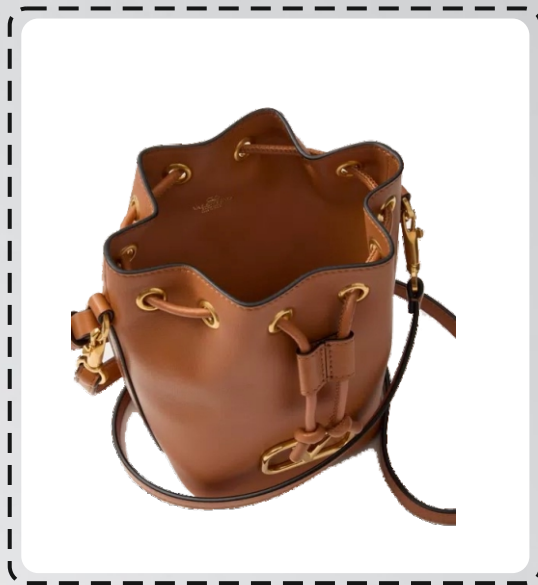


CCLH(F)SH - 103

BUCKET
CASUAL AND FORMAL



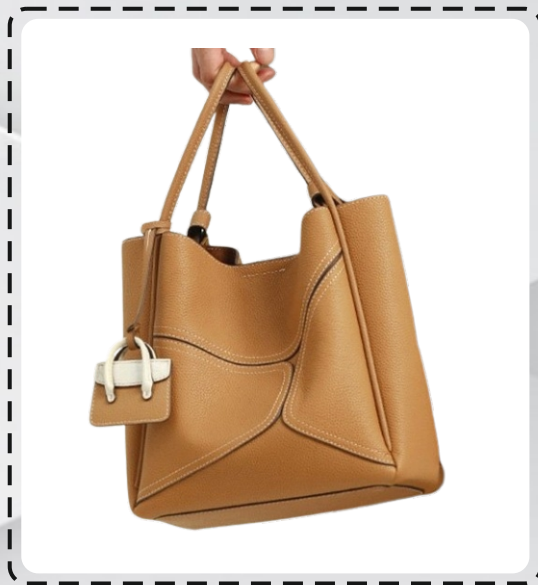
CCLH(F)BU - 101



CCLH(F)BU - 102



CCLH(F)BU - 103

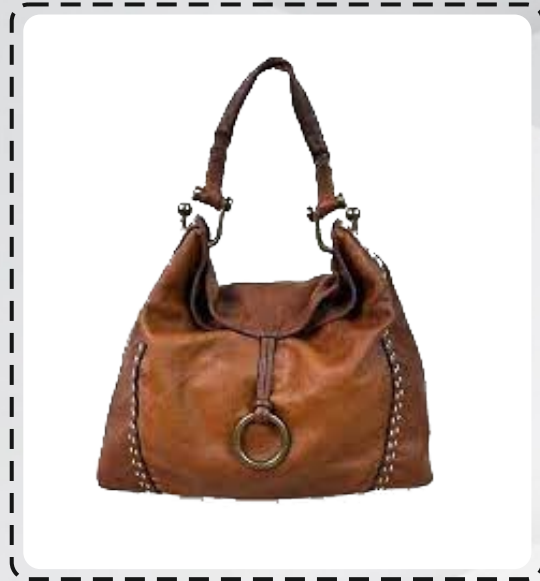


CCLH(F)BU - 104

HOBO
CASUAL AND FORMAL



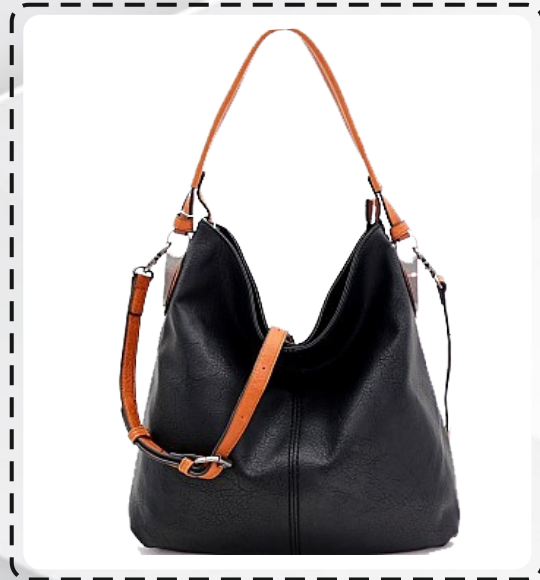
CCLH(F)HB - 101



CCLH(F)HB - 102



CCLH(F)HB - 103



CCLH(F)HB - 104

CROSSBODY
CASUAL AND FORMAL



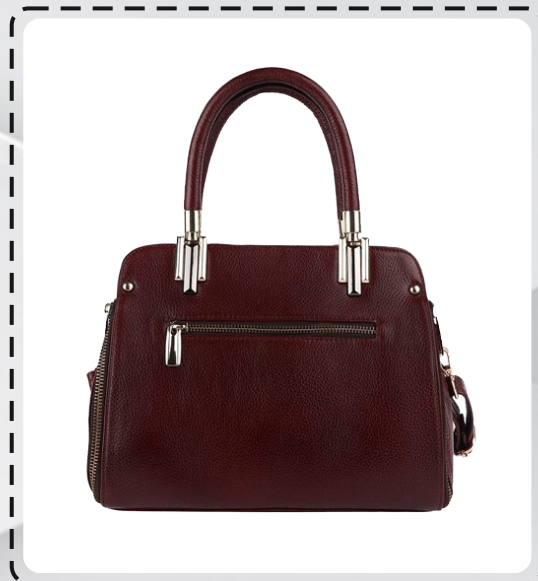
CCLH(F)CB - 101



CCLH(F)CB - 102



CCLH(F)CB - 103

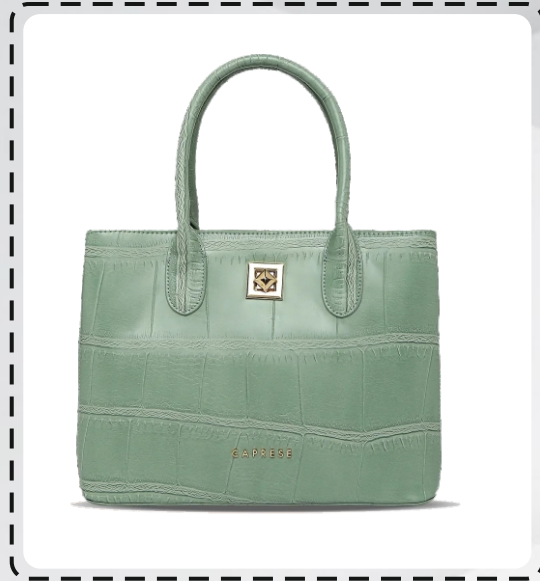


CCLH(F)CB - 104

SATCHELS
CASUAL AND FORMAL



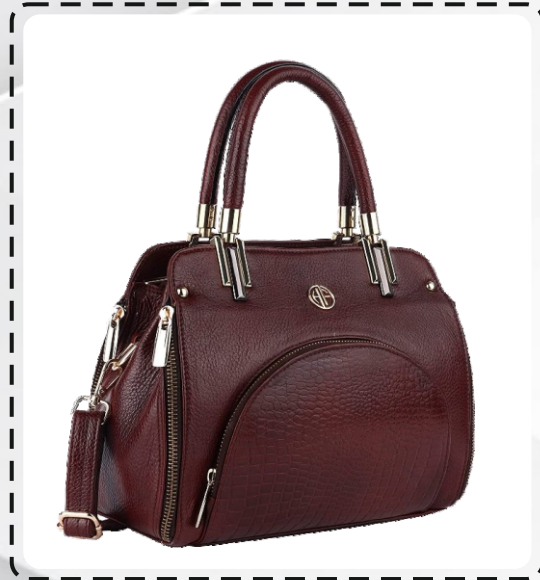
CCLH(F)SA - 101



CCLH(F)SA - 102



CCLH(F)SA - 103



CCLH(F)SA - 104

LEATHER DAILY WEAR BAGS

DESCRIPTION

Discover our sophisticated collection of men's bags, designed for both functionality and style. Our basic bags offer straightforward, practical designs for everyday needs. Padded bags provide extra protection for tech gadgets and delicate items, ensuring your essentials are secure. Slimfit bags feature sleek, minimalist designs, perfect for a streamlined look without sacrificing storage capacity. Briefcases epitomize professional elegance, with organized compartments for documents and devices, making them ideal for business use. Our handbags blend style and practicality, suitable for various occasions, from casual to formal. Backpacks combine comfort and functionality, offering ample space and ergonomic designs for daily commutes, travel, or outdoor adventures. Each bag is crafted from premium materials, ensuring durability and timeless appeal that complements any style.

BASIC CASUAL AND FORMAL



CCLD(M)BS - 101

BASIC
CASUAL AND FORMAL



CCLD(M)BS - 102



CCLD(M)BS - 103



CCLD(M)BS - 104



CCLD(M)BS - 105

BRIEFCASE
CASUAL AND FORMAL



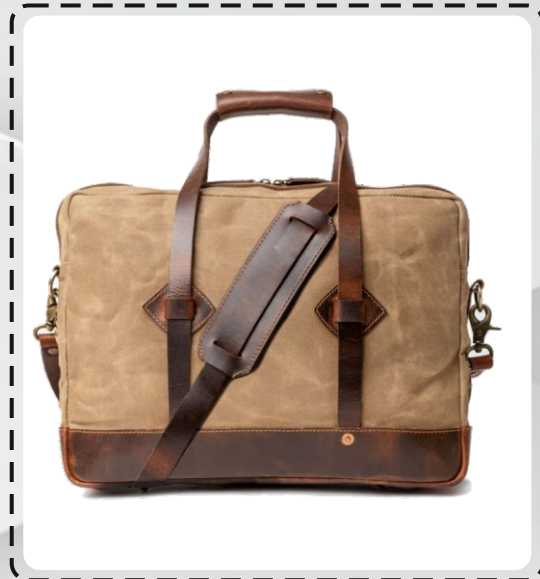
CCLD(M)BC - 101



CCLD(M)BC - 102



CCLD(M)BC - 103



CCLD(M)BC - 104

BAGPACKS
CASUAL AND FORMAL



CCLD(M)BP - 101



CCLD(M)BP - 102



CCLD(M)BP - 103



CCLD(M)BP - 104



CCLD(M)BP - 105



CCLD(M)BP - 106



📍 77, Chittiranjana Avenue,
Kolkata-700012, West Bengal, India

☎ +91 97483 02605

✉ contactcuercraft@gmail.com

🌐 www.cuercraft.com